

The RICOH

FAX3310L

WORKGROUP LASER FACSIMILE



RICOH®

Efficient, Simple, Versatile . . . Made For The

When it comes to achieving optimal productivity, we count on the performance of our business equipment just as much as we do the performance of our workforce. The highly reliable **RICOH FAX3310L** Workgroup Laser Facsimile effectively streamlines workflow and communications with many advanced productivity-enhancing features.

A fast 3-second-per-page transmission speed², 33.6 Kbps modem, 15 ppm print speed, 240 page² expandable memory and a host of other convenient functions are all at your disposal and designed for ease of use so you can complete your work most efficiently. Plus, greater versatility can also be yours by incorporating a PCL printer option, which allows you to continually create high-quality 600 dpi output whether printing from a parallel connected PC or through its optional network interface.

Completing this affordable compact package is the dependability that's always assured due to impressive state-of-the-art engineering By **RICOH®**, a longstanding industry leader in cutting-edge imaging and communication technology. The FAX3310L is built to take on any job, so you can too.

Working Efficiently Means More Time & Cost Savings

- Equipped with a **standard 33.6 Kbps modem** with **JBIG compression**, the Ricoh FAX3310L swiftly transmits your documents to anywhere in the world at three seconds per page¹, keeping operation costs low.

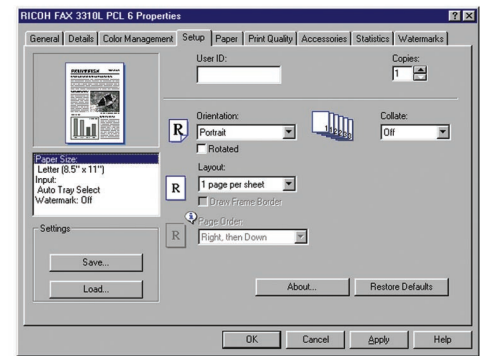
**SUPER
33.6
KBPS**

- The reliable 50-page **Automatic Document Feeder** enables large multi-page documents to be scanned to memory at a fast 2.8 seconds per page², or transmitted directly from the **ADF**.
- By using **Memory Transmission**, documents do not have to be left in the document feeder if the fax unit is busy. Simply scan the document into memory and transmission will take place once the phone line is available again. With the **Parallel Memory Transmission** Feature the FAX3310L will dial and begin transmission after the first page has been scanned, further speeding up the document transmission process.
- Dual Access** lets you store documents into memory while printing or transmitting another job from memory so your workflow is uninterrupted.

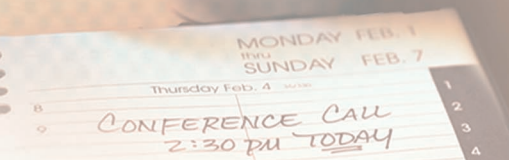
- Auto Document** lets you store frequently sent documents such as directions, specifications, pricing, cover pages, etc. into memory and sending it whenever required. This eliminates having to pull the document from a file when needing to send it and it also means that the document being sent is always clean.
- Output printing at a fast **15 page per minute print speed** further heightens productivity.
- Energy Saving**. During those times when the FAX3310L is idle it will continue to save you money by going into an Energy Saver Mode, consuming only 1.2 watts⁴ or less of electricity. The FAX3310L is fully **Energy Star compliant**.



A Great Fax. A Great Printer.



- Optional Print Capability**. Make your FAX3310L even more powerful with the **Printer Option**, which can be connected directly to a PC or to a network with the optional Network Interface Board.
- You'll enjoy **15ppm** high-quality true **600 dpi** output with its **PCL5e/PCL6** capability, plus other productive features like standard **16 MB printer memory** (expandable to 128 MB), document collation, slip sheet insertion, plus optional **PostScript Level II** compatibility for Macintosh users.
- Utilizing the built-in by-pass tray you can also print on labels, overhead projector transparencies, and postcards.
- Ricoh's unique edge smoothing enhances your printed document to appear as if printed at 1200 dpi.



Work You Do

Versatility That Fits Right In Your Office

The sleek, compactly designed Ricoh FAX3310L fits even into the tightest office spots, yet offers just as much versatility as many larger fax systems.



FAX3310L shown with optional paper feed unit

- The standard **250 sheet, front loading paper tray**, and **100 sheet bypass tray** can be supplemented with an **optional 500 sheet tray**, providing a total paper capacity of 850 sheets.
- **Separate toner and development units** make for easy replacement (as easy as replacing an All-In-One Cartridge) and result in lower cost per page. The developer also contains a user replaceable **Photo Conductor Unit** to minimize maintenance costs.
- The FAX3310L delivers exceptional print quality when receiving documents, utilizing Ricoh's **Super Smoothing HQ...** advanced technology that eliminates rough edges on diagonal lines and curves, and its **64 Gray Scales of Halftone Mode** utilizing Ricoh's **Error Diffusion Method**. This technology reproduces vivid halftones of photos and illustrations while keeping text crisp at the same time.
- In addition to the standard **3 MB (240 pages) memory capacity**, which features a 12-hour memory backup, you can also add optional memory (40MB) expanding it to 1,500 pages. Memory allows documents to be received and stored in memory should paper run out, then printed once the paper is replenished. With the 40MB expansion, memory is retained indefinitely so that documents are not lost even if there is a loss of power.

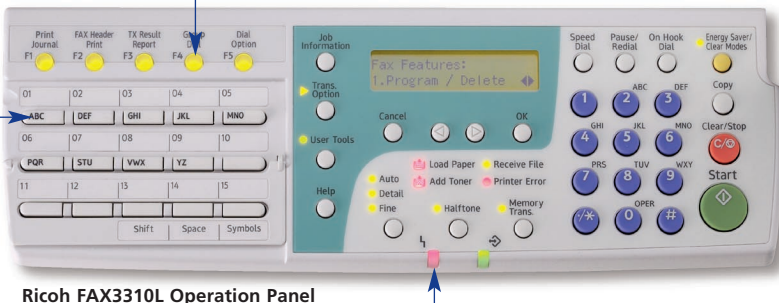


Toner Cassette yields 5,000 pages at 4% coverage.²
Developer Unit yields 45,000 pages at 4% coverage.²

Keeping It Simple . . . So You Can Work Easier

Performing an operation on the Ricoh FAX3310L is simply a snap.

- Easy to read and use, the **straightforward Operation Panel** clearly guides you through any function.
- **Five Programmable User Function Keys** give users one-touch access to their most frequently used features.
- The **Status Indicator Lights** keeps you informed of the operational status of the fax system even from a distance. A green light indicates a transmission or reception is in process, while red indicates that toner or paper is out or there is a communication error.
- Store up to 30 frequently called fax numbers in the FAX3310L's **Quick Dial keys** for immediate one-step transmission.



RICOH®

RICOH FAX3310L SPECIFICATIONS

Type: Desktop Facsimile
Recording Method: Laser
ITU-T Compatibility: Group 3 (V.34); ECM
Modem Speed: 33.6 Kbps with auto fallback
Maximum Transmit Speed: 3 seconds¹
Data Compression: MH/MR/MMR/JBIG
Scan Speed (standard resolution): 2.8 seconds²
Dual Access: Standard
Standard Document Memory: 3 MB (240 pages³)
Optional Document Memory: 40 MB (1,500 pages³)
AutoDialer: 30 Quick Dials, 50 Speed Dials, 5 Groups
User Function Keys: 5 Dedicated keys
Document Memory Backup: 12 Hr (standard memory)
Auto Document Feed Capacity: 50 Sheets
Maximum Document Width/Scan Width: 8.5"/8.4"
Document Length: 23.7"
Scan Resolution: Standard: 200 x 100 dpi
Detail: 200 x 200 dpi
Fine: 200 x 400 dpi
Halftone: 64 Shades of gray with Error Diffusion
Maximum Print Speed: 15 pages per minute
Maximum Print Resolution: 600 dpi
Resolution Enhancement: Super Smoothing HQ™
Maximum Recording Width: 8.4"
Maximum Recording Paper Size: 8.5" x 14"
Standard Paper Capacity: 250 Sheet cassette tray
100 Sheet By-pass tray
Optional Paper Capacity: 500 Sheet
LCD Display Size: 2 Lines (22 Characters)
Power Consumption:
Energy Saver Mode: 1.2W and lower (without options)
Power Requirements 115 VAC, 60Hz
Environment: 59 to 77°F, 30 to 70% RH
Dimensions (WxDxH): 17.9" x 19.8" x 16.4"
(without options)
Weight: 40.8 lbs. (without options)

GENERAL FEATURES

Auto Collation
Auto Document
Auto Document Feeder
Auto Start Initial Setup
Clock With Auto Daylight Savings Time
Direct Fax Number Entry
Dual Access
Energy Saver Mode
Fax Number Entry Before Loading Document
File List
Group Dial
Group Dial List Report
Halftone with Error Diffusion
Help on Demand
Keystroke Programs
Label Registration for Quick/Speed Dials
LCD Prompts
Memory Storage Report
Ozone Emission-free
Program List Report
Personal Codes and Code List Report
Print Quick Dial Labels
Quick Dial Keys and Quick Dial List Report
Remaining Memory Indicator
Resolution Control

GENERAL FEATURES (cont.)

Restricted Access
Scanner Cleaning Notification
Specified Cassette Selection List Report
Speed Dial Codes and Speed Dial List Report
Telephone Connection
Telephone Directory
Usage Counter
User Function List Report
User Parameter List Report
Wild Cards

COMMUNICATION FEATURES

Answering Machine Interface
Automatic Fax/Tel Change
AI Redial
Busy Tone Detection
Chain Dialing
Communication Failure Report
Distinctive Ring Detection
Error Correction Mode
Error Report
Monitor Speaker
On Hook Dialing
Power Failure Report
Pulse/Tone Selection
Redial (Auto/Manual)
Shortened Protocol

TRANSMISSION FEATURES

Batch Transmission
Blank Document Detection
Closed Network
Confidential Transmission with ID
Fax Header (TTI)
Forwarding
Immediate or Memory Transmission
Label Insertion
Memory Transmission Immediate Stop
Memory Transmission Result Report
Page Count
Page Retransmission
Quick (Parallel) Memory Transmission
Send Later
Serial Broadcasting (Immediate and Later)
Transmission Confirmation Report
Transmission Result Report

RECEPTION FEATURES

Authorized Reception
Auto or Manual Reception
Closed Network
Confidential Reception with ID
Confidential Reception Report
Continuous Polling
Document Separation Mark (Checkered)
Memory Lock (All or By Address)
Multi-Polling Reception
Page Separation & Length Reduction

RECEPTION FEATURES (cont.)

Poll Later
Polling Reception (With and Without ID)
Reception Mode Selection (Auto/Manual)
Reception Time Printing
Specified Cassette Selection
Substitute Reception

COPY FEATURES

Copy up to 99 copies
Copy at 15 pages per minute

PRINTER FEATURES

15 ppm at 600 dpi With Edge Smoothing
Bi-Directional Parallel Port
Collated Printing
Font Download
Network connectable (Requires Opt. NIB)(Ethernet)
Network OS
- Novell NetWare 3.x, 4.x, and 5.x
- MS Windows NT 4.0/2000
- MS Windows 95/98/Me/XP
- Mac OS 8.x, 9.x, and X
(Mac OS X (Classic) is supported)
PCL5e/6 Compatibility
- MS Windows 95/98/Me/XP
- MS Windows NT 4.0/2000
PostScript 2 Compatibility (Optional)
- MS Windows 95/98/Me/XP
- MS Windows NT 4.0/2000
- Macintosh driver
Printer Driver Features
- Custom Paper Size
- Layout
- Page Protect
- Page order³
- Paper Selection
- Slip Sheet³
- Toner Saver
- User ID
- User Code
- Watermarks
Resident Fonts
- PCL Fonts = 10 TrueType / 35 Intellifonts
- PS Fonts = 80 (Only available with PS2 Opt.)
10/100 Base-T Network Interface Board (Opt.)

OPTIONS & SUPPLIES

ADF Maintenance Kit Type 300
Developer/Photo Conductor Unit Type 1013
Feature (Memory) Expander Card Type 300 (40MB)
(non volatile)
Photo Conductor Unit Type 1013
Printer Interface Type 1013 (see Printer Features)
Telephone Handset Type 1018
Toner Cartridge Type 1160 Black
Type 1018 PS2 Compatible Kit
10/100 Base-T Network Interface Board Type 1018
32 MB Printer Memory
64 MB Printer Memory
128 MB Printer Memory
500 Sheet Paper Cassette

- 1 Approximately 3 seconds per page at 33.6 Kbps is dependent on optimal line quality, and customer performance may vary by location. Current systems used by the Public Switched Telephone Network (SPTN) generally support 28.8 Kbps modem speeds or lower.
 - 2 Based on ITU-T Test Chart #1 in standard resolution.
 - 3 Not available for PS2/MAC
 - 4 Without options
- Specifications are subject to change without notice.



EPA 2000 Office Equipment Partner of the Year (5th consecutive year)
EPA 2000 Labeling Partner of the Year
Ricoh Corporation has determined that this product meets the Energy Star® guidelines for energy efficiency.

Printed in U.S.A. on recycled paper because Ricoh cares.

Ricoh is a registered trademark of Ricoh Company, Ltd.
All other trademarks are the property of their respective owners, ©Ricoh Corporation

OFFICIAL PRINTER,
COPIER AND FAX
OF THE PGA OF AMERICA



RICOH®
Image Communication

Ricoh Corporation, Five Dedrick Place, West Caldwell, NJ 07006
Phone: (973) 882-2000 Website: <http://www.ricoh-usa.com>

FA-0105